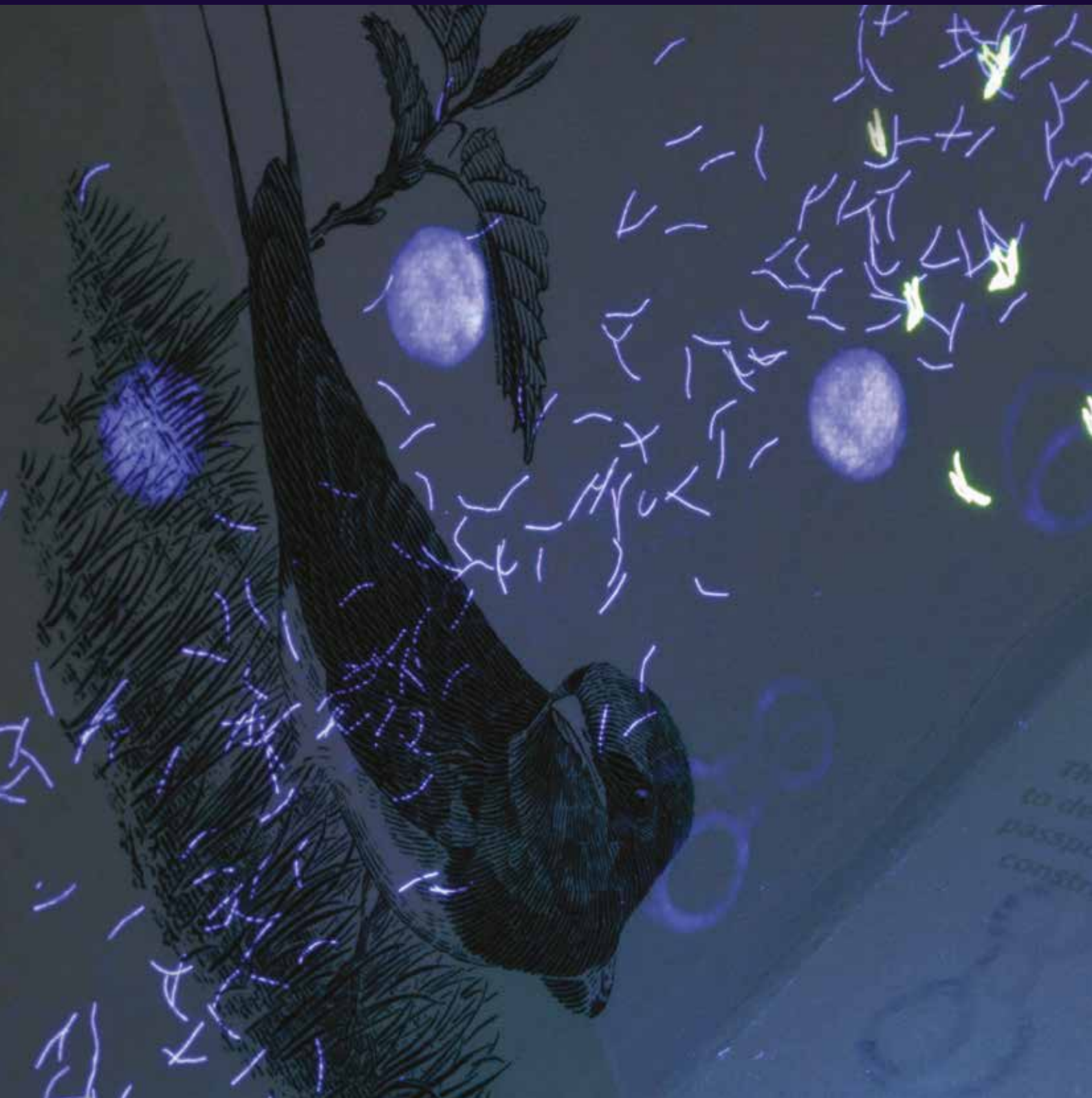




Skylight™



Description

Skylight™ is a complex, unique and tamper proof watermarking feature where small areas of the paper are specially engineered to be lighter and thinner than the surrounding area and background sheet.

Threat countered

Book dismantle & reassembly, Lifting or splitting of a sheet, Chip related attack

Benefits to customer

- Any attempt to lift or split the paper can cause the page to rupture around the SkyLight™ feature making it totally unusable for any further activity
- Reassembly with fraudulent data will result in the mis-registration of print
- This therefore hinders splitting or lifting of the sheet and reassembly with fraudulent data
- Provides immediate and obvious evidence of tampering
- Can easily be used in conjunction with other security features
- Ideal for use as an end-page, bio-data page or observation page defence
- Provides further security to the chip in the cover if used as the document's end papers



How it works

Different layers of thickness are achieved to register during the paper making process by welding metal discs to the mould cover. These differences are specifically controlled (to the micron), ensuring the substrate can still be printed and laminated as normal.

Any additional info

- SkyLight can be used in conjunction with other paper security features such as cylinder mould watermarking, Cornerstone®, Edgestone™, fibres, planchettes and threads.
- Feature compliant with the recommendations laid out in ICAO document 9303 Part 2

